

FEP ME 975 HC



FEP ME 975 HC

FEP ME 975 HC is a compact x-ray inspection system, ideal for screening of hold baggage and small or mid-sized items. FEP ME 975 HC features the most advanced detection technology, acquisition electronics, and PC data management software with a control console ergonomically designed for faster screening. New imaging software offers resolution and penetration at the highest levels of its class, user friendly interface, multi-level access, new image archiving system and new service software.

- Real time image processing at 24-bit
- Resolution and penetration at highest levels
- Visualization of black & white and color images on switchable single monitor, or on optional double monitor system
- Implementation of key enhancements "on the fly"
- Innovative new digital archiving system
- Ability to automatically store working sessions

TECHNICAL SPECIFICATIONS

Inspection unit

- Dimensions: 2980mm (L) x 1235mm (W) x 1739mm (H)
- Weight: 650kg
- Maximum bag dimension: 900mm (W) x 750mm (H)
- Conveyor belt height: 780mm (adjustable)
- Conveyor belt speed: 0.2m/s
- Maximum load: 200kg
- Power supply: monophase, 230 Vac or 110 Vac +/- 10%
- Frequency: 50/60Hz +/- 3Hz
- Power absorbed: < 1.5kVA
- Duty cycle: 100%

Control unit

- Operator workstation dimensions: 900mm (L) x 800mm (W) x 750mm (H)
- Weight: 30kg
- Controls:
 - Key switch
 - Belt start button
 - Processing buttons
 - Zoom buttons
 - Alarm button
 - Emergency Stop
- 1 LCD widescreen monitor

X-Ray generator

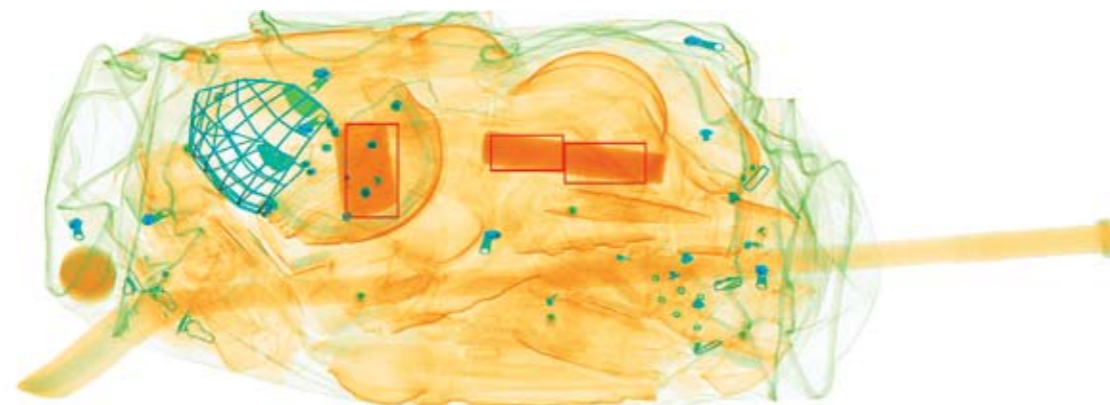
- High frequency monoblock: 30kHz
- X-ray tube voltage: 145kV
- X-ray tube current: 1mA



Black & white image: High-quality image for recognition of threat objects (gun, knives, etc.)



Color image: Materials are represented as orange for organic, blue for metal, green for inorganic (other than metal)



Optional ADS software (red outline)

Detection system features

- Resolution:
 - 36 AWG guaranteed
 - 38 AWG typical
- Penetration:
 - 26mm steel guaranteed
 - 28mm steel typical
- Detectors:
 - 1152 photodiodes on two rows, "L" shape

Standard image enhancement features

- Material separation
- Contrast optimization
- Edge enhancement
- Reverse image
- "Low color levels" removal
- Energy stripping
- Histogram equalization
- Pseudo colours
- Continuous zoom x2 up to x64 and Rotozoom
- All features available "on the fly"

Advanced functions

- Density alarm (adjustable threshold)
- ADS (optional)
- TIP (optional)
- TIPnet (optional)
- Digital image storage
- Automatic worksession archiving, with off-line post-processing

X-Ray protection information

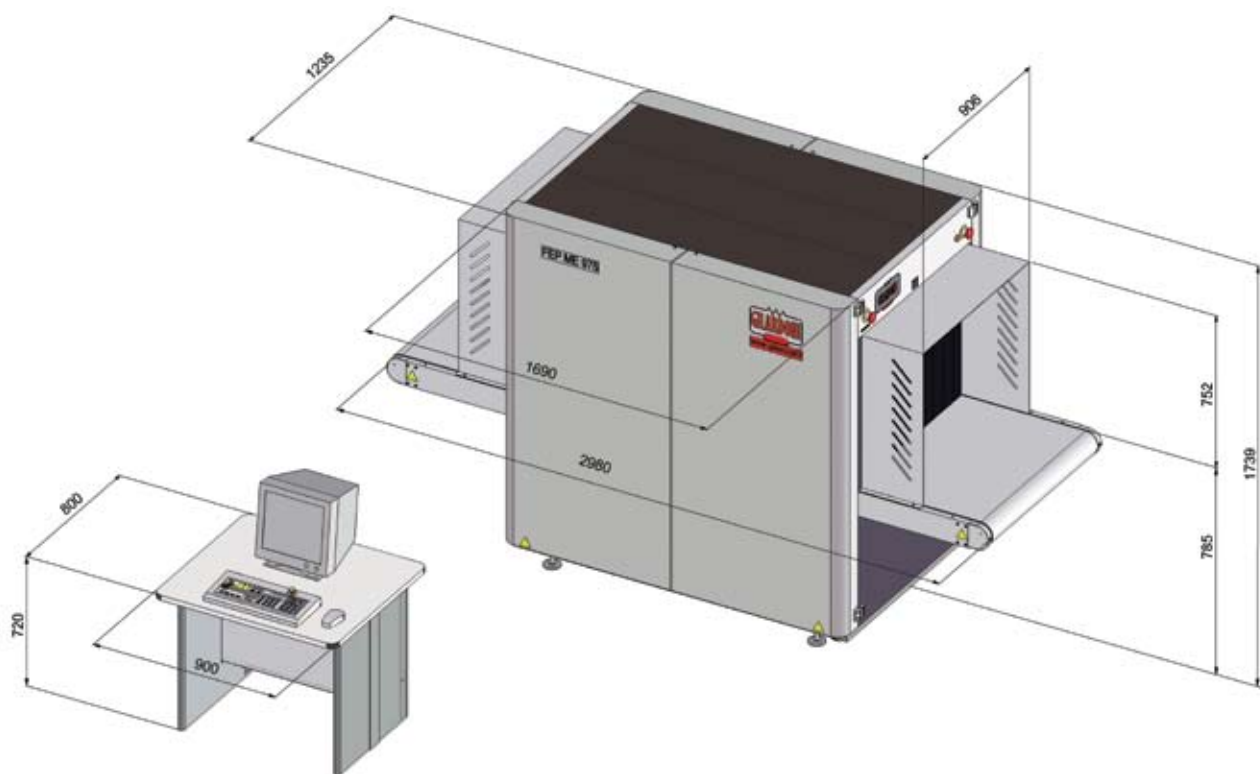
- The system complies with applicable international regulations on X-Ray protection
- Leakage dose at 10cm: < 1.0µSv/h (0.1mR/h)
- Film safety: guaranteed up to ISO 1600/33 DIN

Environmental compliance

- Operational temperatures: 0°C – 40°C
- Storage temperature: -20°C +60°C
- Humidity: 90% non condensing
- Protection class: IP22
- Noise level: < 60dB (A)



FEP ME 975 HC



Dimensions in mm

Reserving the right to improve and modify

RESEARCH LABORATORIES acknowledged "Highly Qualified" with decree D.M. 9-10-1985 – L.46/82 art.4

Head office and facilities:

Via **Arturo Gilardoni**, 1 - 23826 Mandello del Lario (LC) - Italy

tel. (+39) 0341-705.111 - fax (+39) 0341-735.046

e-mail: gx@gilardoni.it - www.gilardoni.it

Export department:

tel. (+39) 0341-705.311 - 0341-705.224

e-mail: secur.export@gilardoni.it

REFERENCE REGULATION: EC, IEC, TSA, STAC, DfT, ENAC

